



Nurse Call Monitoring System Series 644

Micro-controller based Advanced reliable, secure,
cost-effective solution for every Hospitals and Care institutions

**Available with Wired and Wireless
Communication Systems**



SYSTEM OVERVIEW

Series 644 is result of our 25 years of experience in installation and monitoring of Nurse Call Systems and continued efforts of our dedicated R & D team.

It is Micro-controller Based Embedded system. It has its own standalone communication system and hence is not affected with computer related virus. It does not require operating licence or its renewal. The series is available in Wired and Wireless version.

Each bed, toilet or bath rooms are provided with specially designed call units. System operates on low voltage DC. Power is only required at Master Controller Hub and Nurse Station Display Unit.

Specially designed 4 colour Corridor lamp units helps in indicating status of connected bed in the room and toilets/ bath room hence nursing staff can notice pending calls and patient is served instantly.

The system has specially designed display units with 7 segments 4-digit LED of Red and Blue colours. The system has built in non-attendance timer thus calls pending more then set time is converted to Emergency Call and display unit blinks the pending bed number.

To generate call, each bed is provided with Bed Side Call Unit with Remote Handset unit. Call from Toilets can be generated with Toilet Emergency Call & Reset Unit. Bathroom call can be generated with Shower Pull Cord Unit.

Any call generated from these call stations are received and registered at Master Controller Hub or Nurse Station Display Unit. Nurse Monitor displays the pending normal calls and Code Blue Emergency calls.

HIGHLIGHTS

Compact and flexible:

The system has specially designed Compact Nurse Station Display unit. It can be mounted on wall or table with very low space requirement. It displays pending calls with 7 segment Red / Blue 4 digit LEDs for clear visibility. It is flexible to accommodates up to 64 call points.

Code-Blue / Assist Call facility:

While attending call, if Nurse feels requirement of additional help, she/ he can generate Code Blue call by pressing dedicated button.

Non-attendance Timer:

The system has built in non-attendance timer. Bed number of any pending calls beyond set time is flash at the display unit thus attention of nurse is drawn.

Four Colour Corridor Lamp Unit:

The system also has specially designed 4 colour corridor lamp unit to display of system and pending calls at room from the corridor. This helps in service time and work load of attending staff.

Dedicated Status Indicators:

It has automatic error detection technology. Bed Call Units has Ready LED indication which shows that the system is connected.

Easy wiring:

System components can be connected with 2 pair telephone wire / CAT 5 cable with simple wiring and hence economical in wiring.

Cost effective solutions:

Series 644 are reliable, compact still cost-effective solutions. Components cost are moderate and wiring cost is also low as need only 2 pair telephone 644 series. For 644CB CAT5/6 wire is required.

Special Display features:

-Series 644: The longest pending calls highlighted with 2" segmented display for immediate attention, rest 4 pending calls are displayed chronological order.

-Series 644CB: Code-blue calls highlighted with blue color below the highlighted display.

-Series 644CBA: Alpha-numeric numbering facility with dedicated code-blue digital display

Special features Series 644CBAW :

This has all the features of 644CBA with added facility of wireless radio frequency communication facility. With this, no extra wiring from each bed to nurse station is required. Only power point is required at each point. This saves time and cost involved in conducting and wiring.

Modular Units for easy Installation:

All call units are designed for installation with standard 4 module boxes.

Maintenance-free Operation:

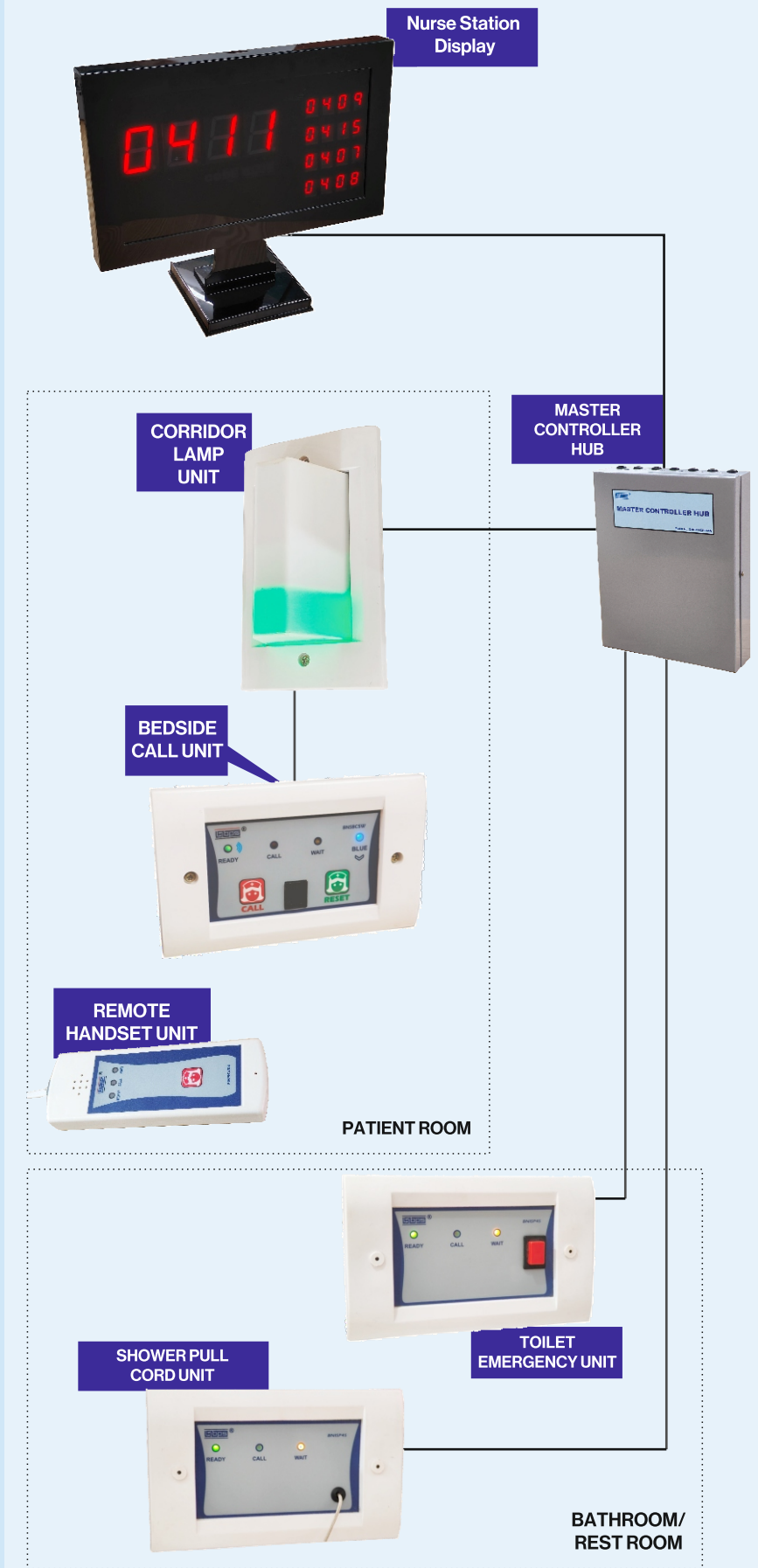
The system dose not require any replaceable batteries.

Renowned for excellence in the field of Nurses Call Monitoring Systems in India, the BPS team proudly introduces an unparalleled solution — a highly dependable and cost-effective microcontroller-based nurse call system.

Our in-house team, equipped with more than 25 years of expertise in designing nurse call systems, has meticulously crafted this solution to cater to the unique conditions prevalent in India.

The Series 644 represents a significant advancement over our earlier models, incorporating enhanced technology and improvements to ensure an even more sophisticated and reliable nurse call system."

WIRING DIAGRAM



Ordering Information for 644, 644CB, 644CBA, 644BAW		644	644CB	644CBA	644CBAW	Quantity
Bedside Call Unit	Bedside Call Unit is the Primary unit for making call from Bed side. It has push buttons to make Call & Reset. Model CB have hidden push button for activation of Code Blue call. Indication for Ready, Call, Wait & Code Blue. It also have socket suitable for Hand Set unit.	BNBC60	BNBC6C	BNBC6CA	BNBC6CW	1 per bed
Remote Handset Unit	This serves as remote device for generating normal call. It is connected to Bed Side Call Station Board. It have flexible cord of 2 meters, RJ12 Jack connector Push Buttons for Call. LED indications for Ready, Call & Wait are provided.	BNBH60	BNBH60	BNBH60	BNBH60W	1 per bed
Corridor lamp Unit:	Corridor Lamp Unit is to indicate of status of calls at room. It consists of cluster of LEDs. To Indicate Ready- White, for Pending Call - Yellow- Blinking, for Code Blue Pending- blue- Blinking, for Emergency - Red. This module is connected between NS HUB & Bedside call unit.	BNCL60	BNCL64	BNCL64	BNCL64W	1 per room
Toilet Emergency Call & Reset Unit	Toilet Emergency Call & Reset unit is for making call & Reset the call from patient toilet. It has Call push buttons & Reset Button having Ready, Call, Wait indications. It is to be fixed in side the toilet beside WC.	BNTE60	BNTE64	BNTE64	BNTE64W	1 / Toilet
Shower Pull Cord Unit	Shower Pull button unit is for making call from bathroom. It has integrated operating elements such as call pull cord micro switch, push button and three indicators ready, call wait. Calls from Toilet are automatically treated as Emergency call. Corridor Lamp unit indicates in red and Nurse call display also displays as emergency call.	BNSP60	BNSP64	BNSP64	BNSP64W	1 per Shower
Master Controller Hub	It consists of one Micro-Processor central card, one controller card suitable for connection up to 16 points. It has built in SMPS. Wires from each bed or other calling unit is connected to this unit. Information received is process and displayed at Nurse station monitor,	for Systems: 644, 644CB, 644CBA				
		up to 16 point		BNMC6A		
		up to 32 point		BNMC6B		
		up to 64 point		BNMC6C		
		for 644CBAW hub is not required.				
Nurse Station Display unit	This unit is to be installed in the Nurse Station. It displays the bed no of pending calls from any bed by 4 digit 7 segment LEDs. Up to 5 Pending calls are displayed. It is auto scrolling display. On completion of any call, the display is updated with remaining pending calls. On receipt of any new, Buzzer for brief time is activated to draw attention of nursing staff.	BNNSD60	BNNSDC64	BNNSDA64	BNNSDA64W	EACH NURSE STATION =1
	do --- with display of Code-Blue alert					
	do --- with 4 digits for bed and Alpha display.					
	do -- with 4 digits for bed & Alpha display with wireless (RF based) communication facility					

BAID POWER SERVICES Pvt. Ltd.



152, Block B, Lake Town, Kolkata-700089, West Bengal, India.
+91 (033) 4067 8112, +91 (033) 2521 0322, info@indiapowerhouse.net,
Visit us at: www.baidpower.com

REGISTERED OEM SELLER



Efficient • Transparent • Inclusive